

# iScratch

## Polymer Modified Cementitious Scratch Coat

High-quality, Polymer Modified Cementitious Scratch Coat

### Product Description:

iScratch is a powdered cement-based scratch coat that consists of high-strength hydraulic binders, carefully selected graded fillers, special additives, and polymers (bonding agent). It only requires the addition of water on-site.

iScratch is specifically formulated for use on blocks, block walls, fair-faced concrete, and precast concrete surfaces prior to plaster application.

iScratch can be applied using a spray machine or by manual application.



### Advantages:



Strong Adherence



Uniform Mix



Easy Application



Cost-Effective



Premium Quality Materials



High Productivity



High Strength



Eco Friendly



Enhanced Durability

### Technical Data:

#### Appearance

Color	Grey
Aggregate Size	< 5 mm

#### Standards

iScratch is formulated to comply with following standards:

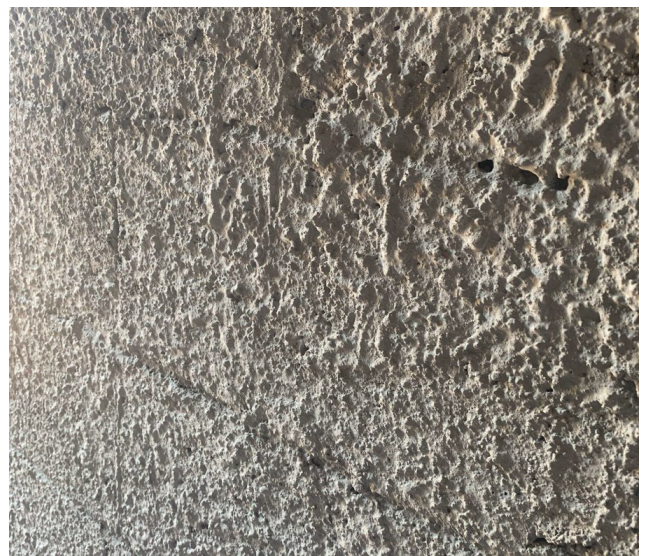
✓ EN 998-1      ✓ DIN 18550      ✓ ASTM C926

#### Performance

Compressive Strength	≥ 20 N / mm <sup>2</sup>
Flexural strength	≥ 4 N / mm <sup>2</sup>
Bonding strength	≥ 0.8 N / mm <sup>2</sup>
(EN1015-12)	

#### Working properties

Pot Life @25°C	Approx. 1.5h
Setting Time	3 – 5 hours



## Installation Procedures:

### Surface Preparation:

- Ensure substrates are in good, strong, and stable condition.
- Substrates must be clean, free from dust, loose particles, or laitance.
- Remove all surface coatings, grease, oil, curing compounds, and other foreign materials that may impair adhesion.
- In hot weather, pre-wet the surface before applying iScratch, ensuring no excess water remains.

### Mixing & Application:

- Add 11.5 – 13.5 liters of fresh, cool, clean water into a deep container.
- Gradually add the contents of the 50kg bag to the container.
- Use a hand drill equipped with a mixing blade or a high stationary mixer to mix until the mixture is uniform and free of lumps.
- Let the mixture sit for 3-4 minutes, then remix.
- For smaller amounts, mix manually with a trowel or other suitable hand tools.
- Spatter Dash G should be applied immediately to the surface to be plastered, ensuring the mortar is fresh and workable.
- If there is a delay in application, do not add more water. Instead, remix until the mortar is workable again.
- Apply a coat of iScratch up to 5 mm thick in a spatter dash form using a spraying machine or a traditional manual spraying machine to achieve the desired rough textured surface.



### Curing:

- Spray water on the plastered surface every 12 hours.
- Continue this process for a minimum of 3 days.
- In dry and hot weather, extend the curing period to 5 days.
- Extending the curing period helps achieve higher mechanical strength and reduces the risk of surface cracking.

### Coverage

4 – 6 square Meters per kilogram

Note: Coverage can differ based on the condition of the surface.

### Storage:

Store in a cool, dry place.

Shelf life: 12 months in unopened packaging.

### Health and Safety:

Wear protective gear during application.

Avoid inhalation of dust and contact with eyes.

### Note:

The manufacturer guarantees the consistent quality of the product but not the method of application.

# iScratch



**Integrated Green Co. IGreen.**

**Riyadh: 7314 Othman Ibn Affan Branch Rd, At Taawun, Riyadh 12476, KSA**

**Al Qassim :52377 Prince Abdulaziz Ibn Mussaed, Al Rawda Dist., Buraydah**

**Contact: +966 562090592 E-mail: info@igreen.sa**